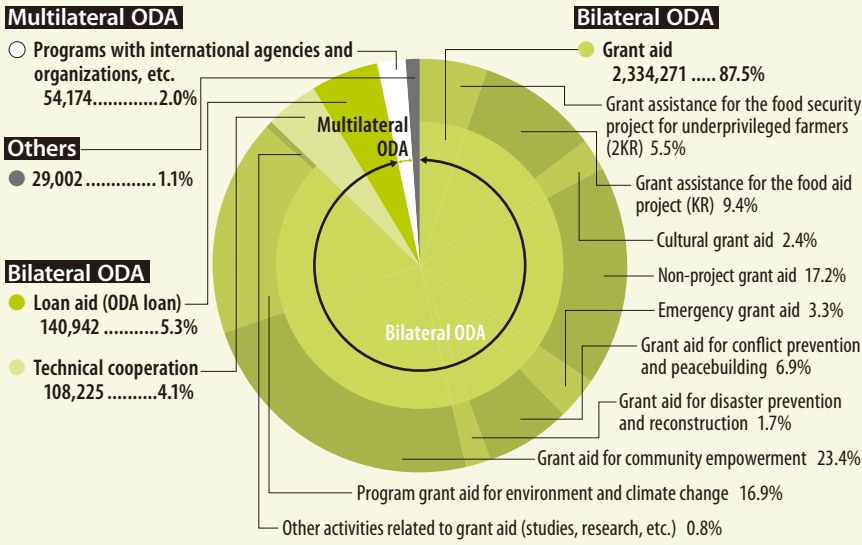


Revenue/Current Profit by Scheme and Client (FY2012)

The charts below indicate JICS' revenue and current profit by type of ODA, by scheme and by client as presented on page 49 in the FY2012 Statement of Net Equity Increase (Decrease). These figures specifically refer to the following line item: I General Net Assets Increase or Decrease: 1. Current increase or decrease: (1) Current profits: 2) Profit from business activities.

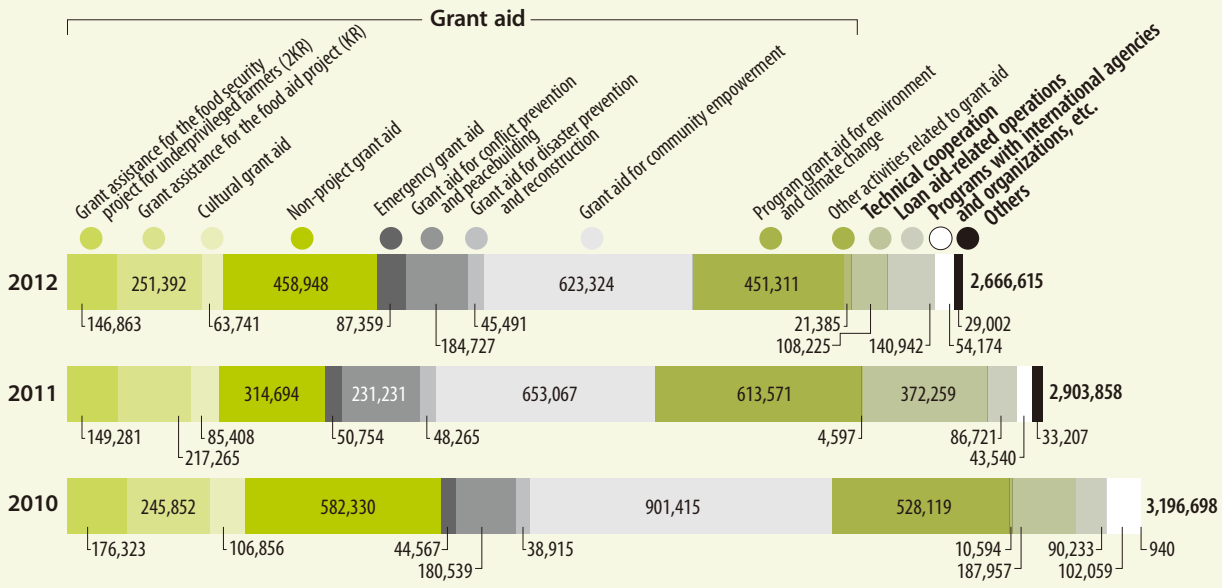
Current Profit of Type of ODA (FY2012) (Unit: thousand yen)



Revenue by Client (FY2012)



Change in Revenue/Current Profit by Scheme (FY 2010–2012) (Unit: thousand yen)



Change in Revenue/Current Profit by Client (FY 2010–2012) (Unit: thousand yen)

